

ANNA ILSLEY
UNDERBELLY



We are very pleased to present Underbelly, a solo exhibition by Anna Ilsley, our second collaboration with Benjamin Parsons x Hannah Payne, Oxford.

The maternal body is a recurring motif in Anna Ilsley's work. Her painted bodies contain multitudes: they might be bursting with lusty warmth but they are also swamped with the weight of responsibility that comes with motherhood. Figures that could be children accompany many of these round-bellied women too – balancing on knees or riding on necks. The Suffolk-based painter is tapping into a subject with a long art historical trajectory; from the numerous portrayals of the maternal icon of the Virgin Mary to Alice Neel or Louise Bourgeois' frank depictions of motherhood's messy realities, the figure of the mother has long held a fascination for artists, informed by the social, political and religious ideals of their times. Ilsley, with her acknowledgement of motherhood as replete with conflicting emotions and responsibilities, presents us with artistic takes on the topic that are explicitly contemporary.

Anna Ilsley (1982 UK) is an artist based in Suffolk, UK. She graduated from Royal Drawing School in 2010 and University of Brighton's BA in Fine Art Painting in 2006. Recent exhibitions include Gutug at Asylum Studios, So Happy Together at Galleri Tom Christoffersen (2022), Crab Bisque at St Chad's Projects (2022) and Lovers Lane at Oceans Apart (2021). She is Artist Associate at British School at Athens and has taken part in many Artist in Residence schemes, most recently at Newnham College, University of Cambridge (2019) for which she received an Arts Council Research and Development Award.

Anna Ilsley – Underbelly

Curated by Kristian Day

02/12 – 22/12

Private view Friday December 1, 6-8pm

Benjamin Parsons x Hannah Payne

16 North Parade Ave

Oxford OX2 6LX

United Kingdom

Open Tuesday - Friday 10-6pm + Saturday 10-4pm

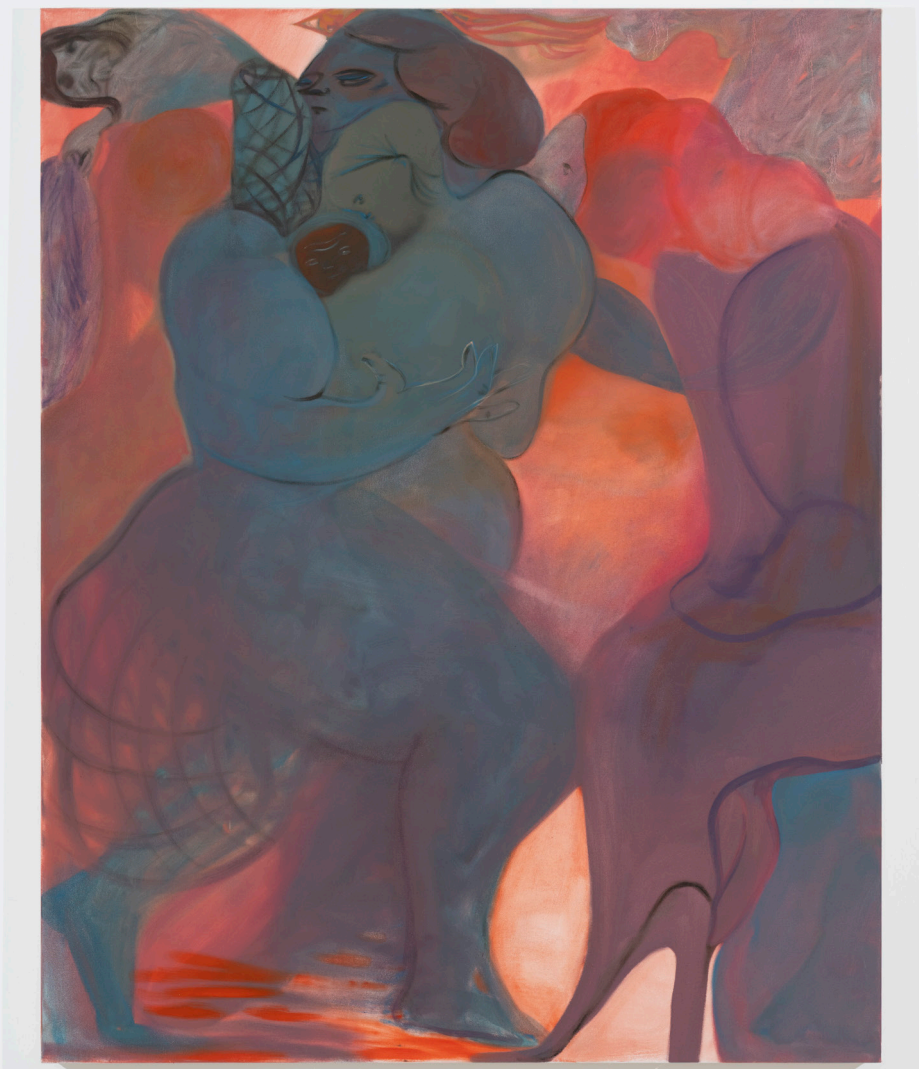
Text - Helena Haimes

Studio photography - Doug Atfield

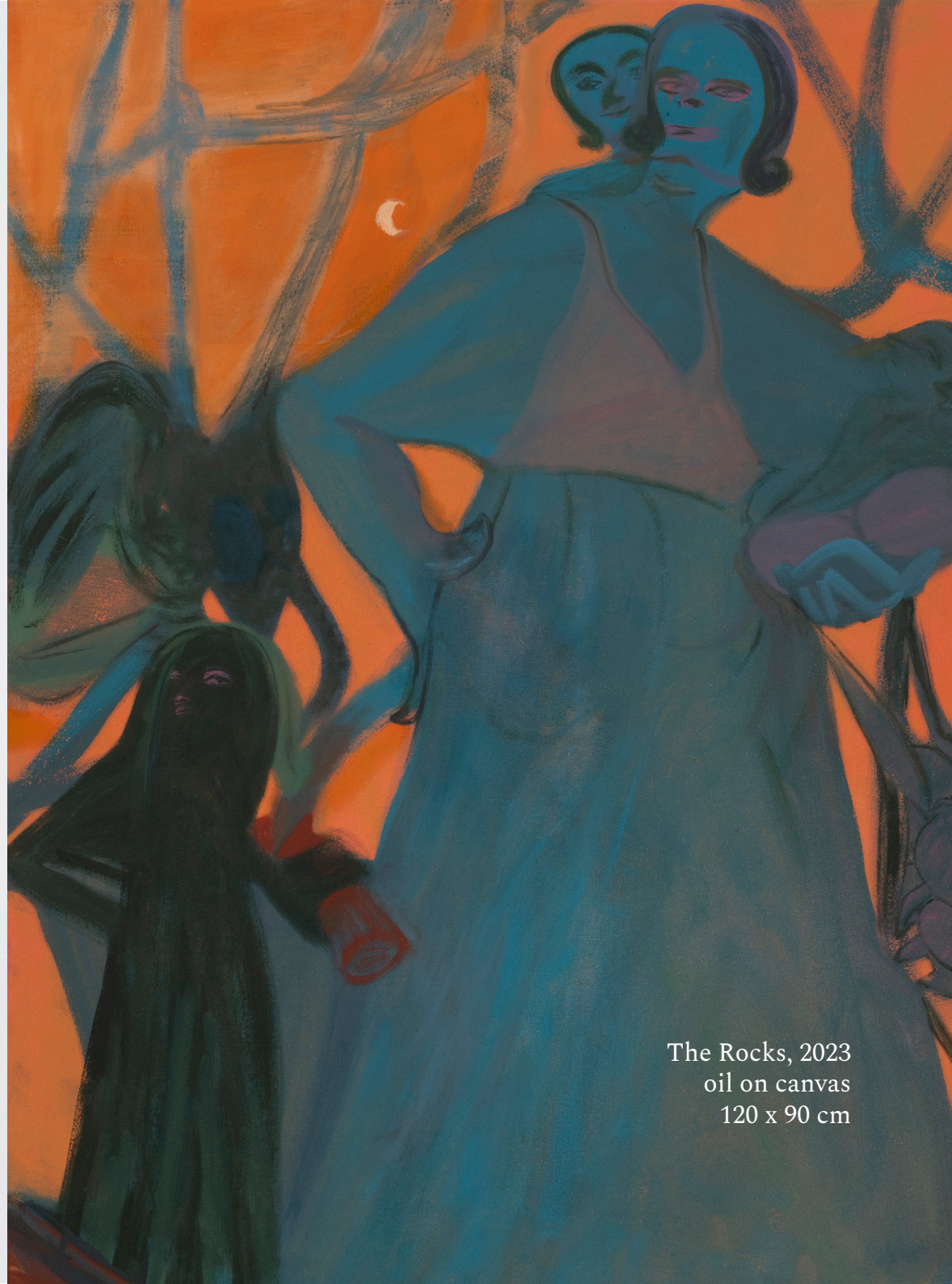
Exhibition photography - Damien Griffiths

Design - It's Art Studio

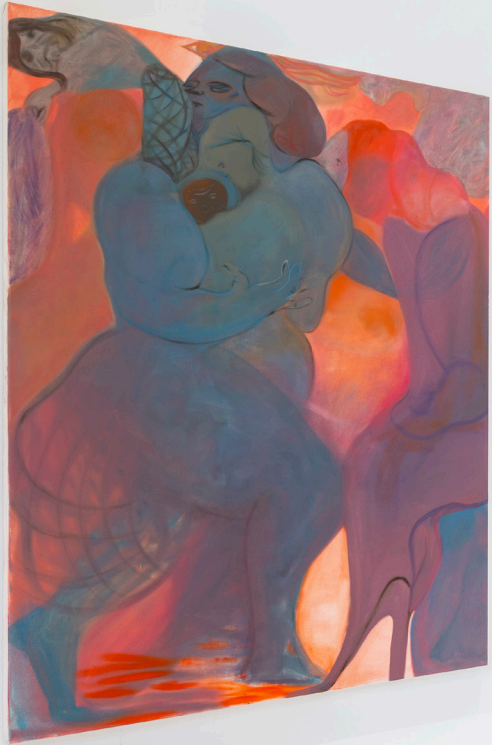




Border, 2023
oil on canvas
180 x 140 cm



The Rocks, 2023
oil on canvas
120 x 90 cm





The Quickening, 2023
oil on canvas
180 x 130 cm

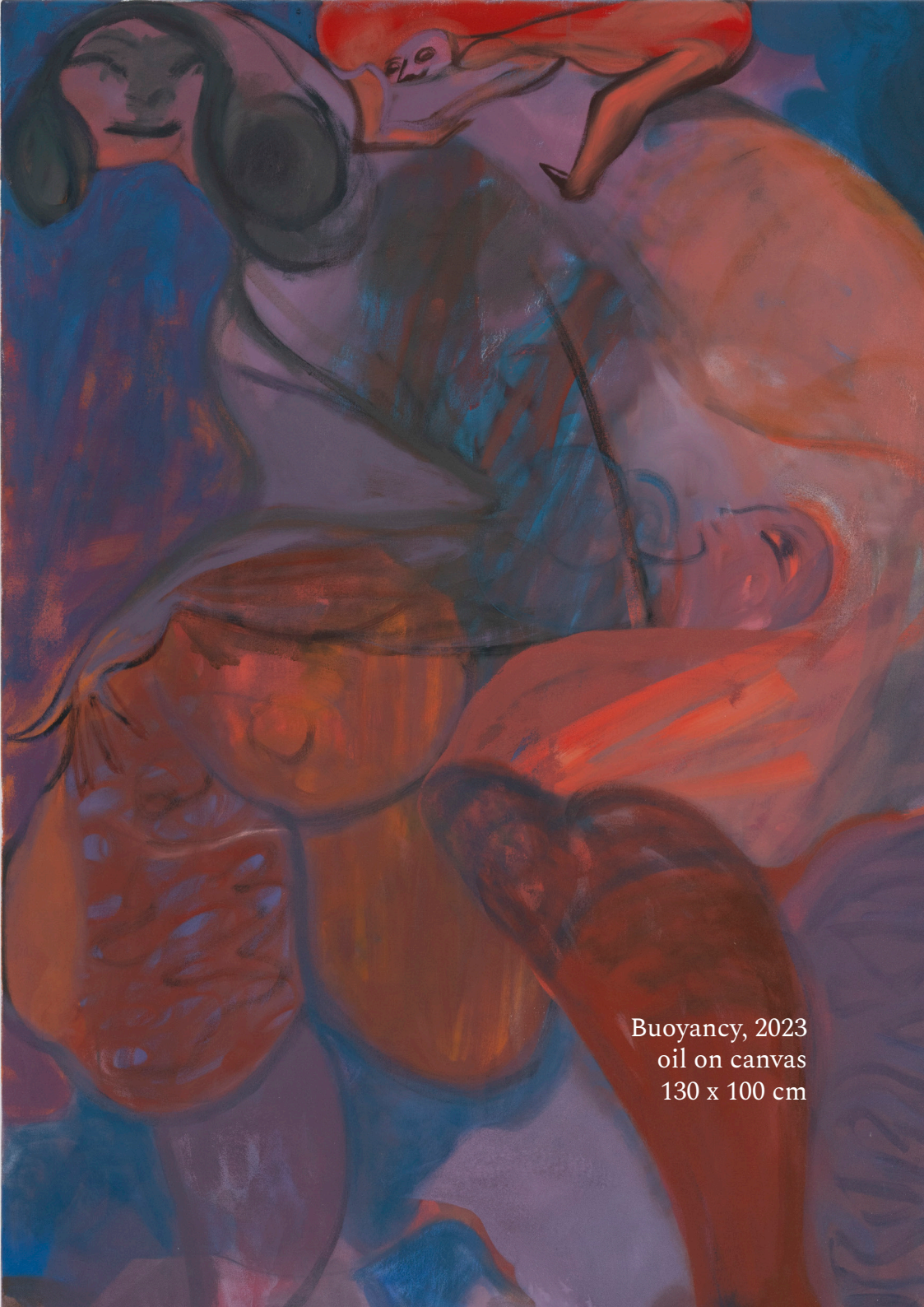


Daybreak, 2023
Oil on canvas
130 x 100



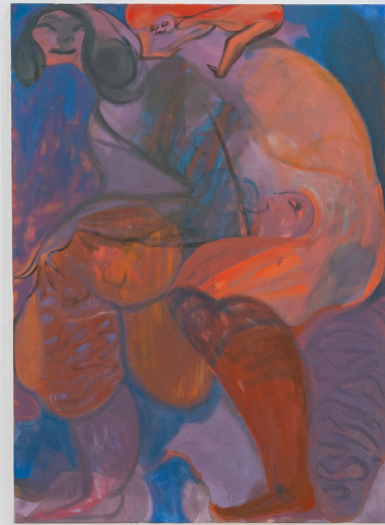


Mantle, 2023
oil on canvas
130 x 100 cm



Buoyancy, 2023
oil on canvas
130 x 100 cm





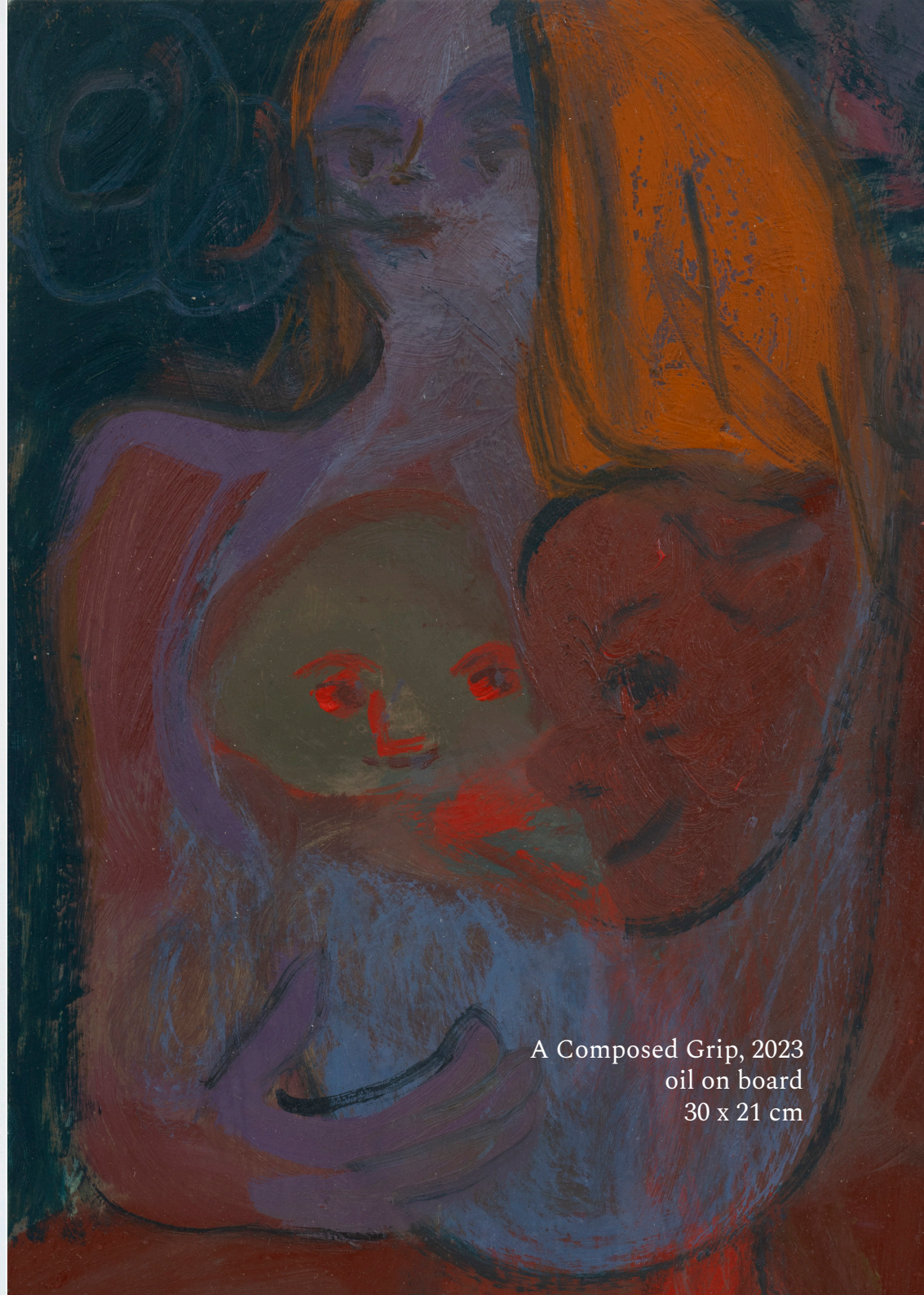


Night Watch, 2023
oil on canvas
100 x 75 cm

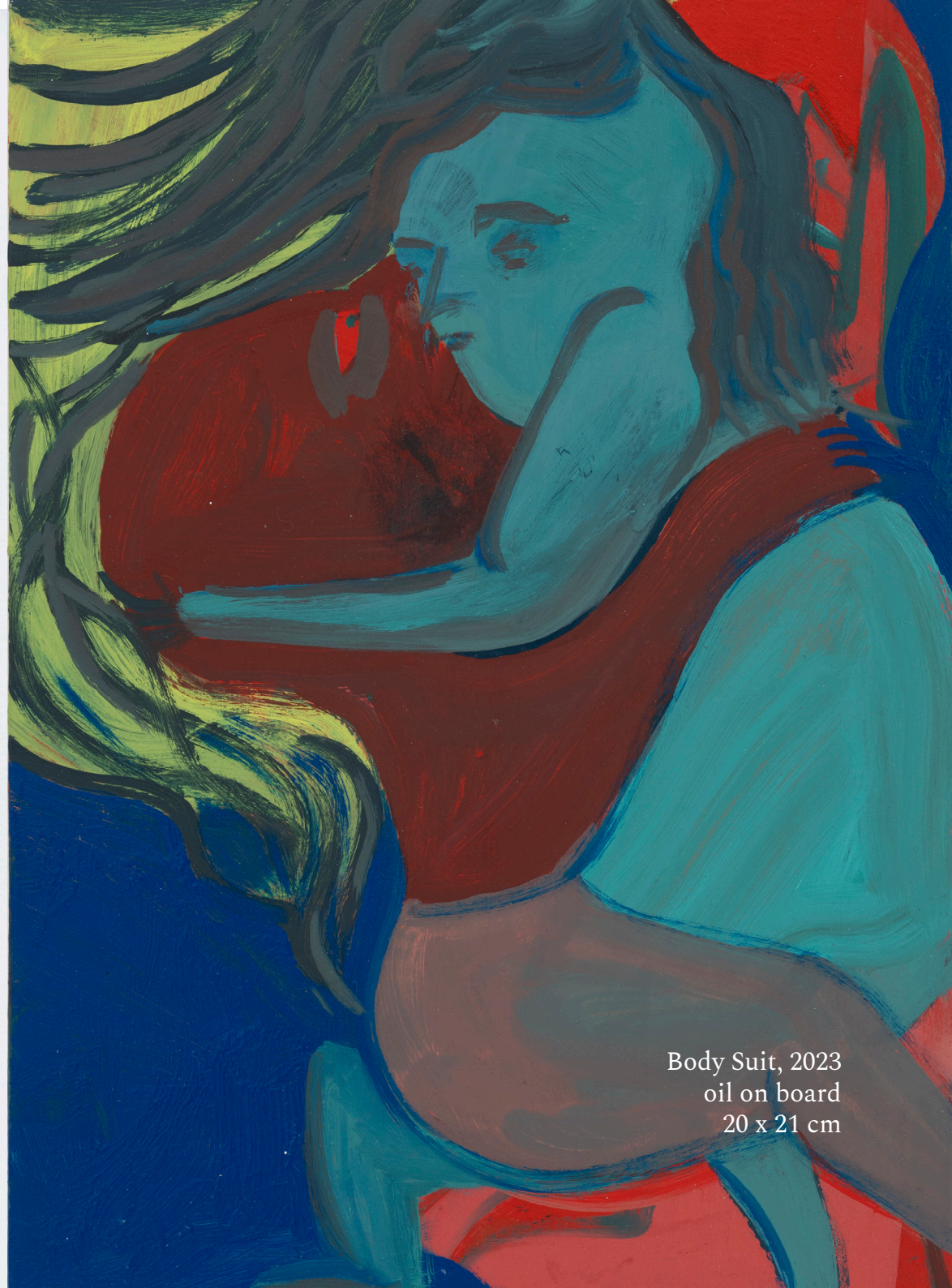
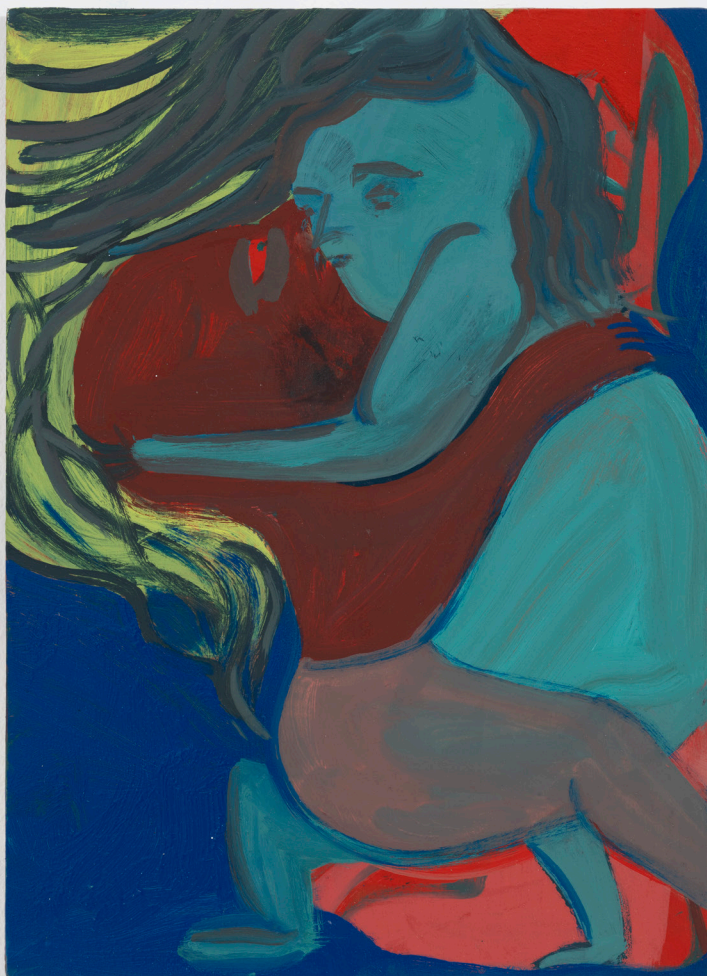


Eyrie, 2023
oil on canvas
120 x 90 cm





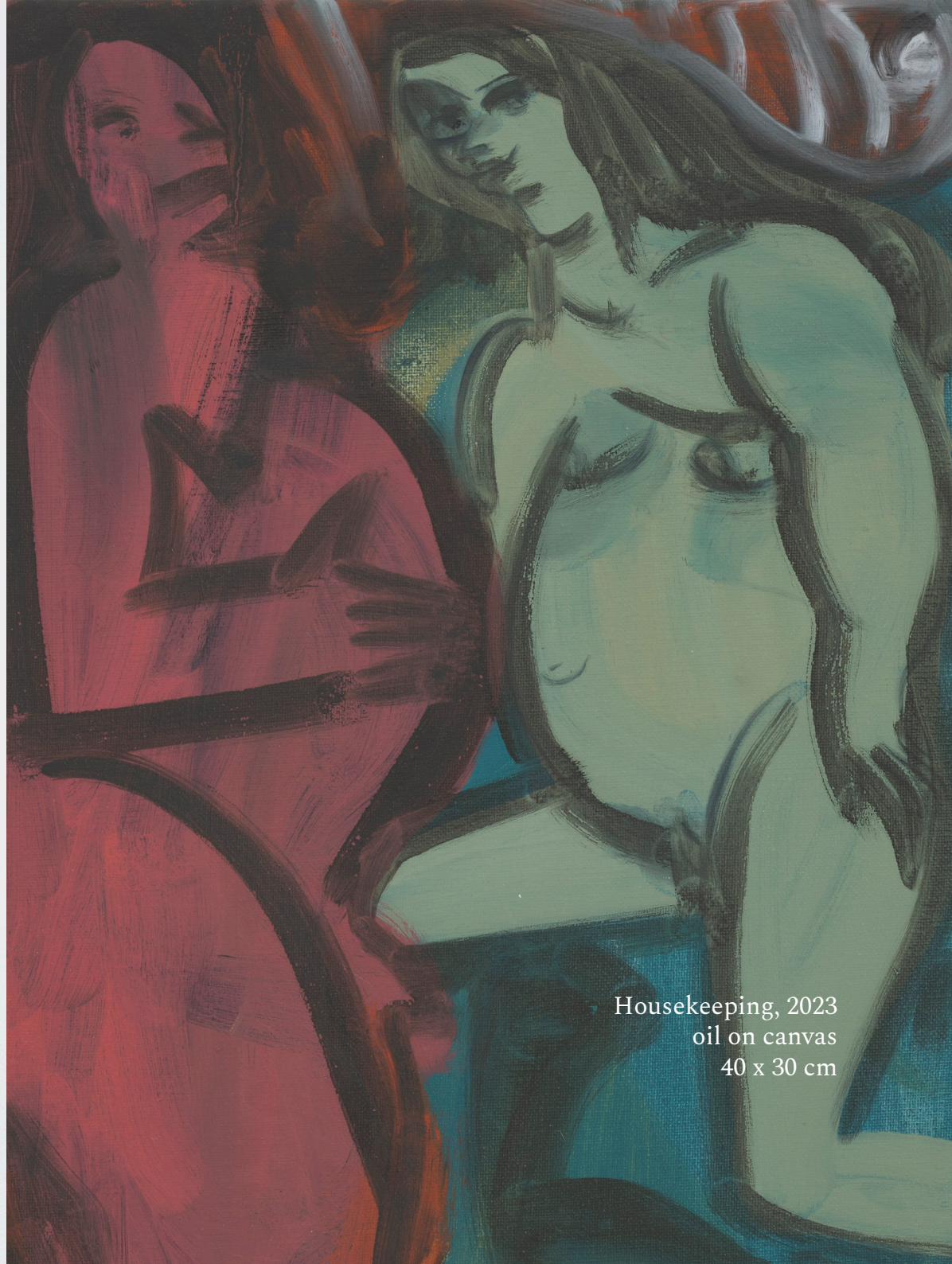
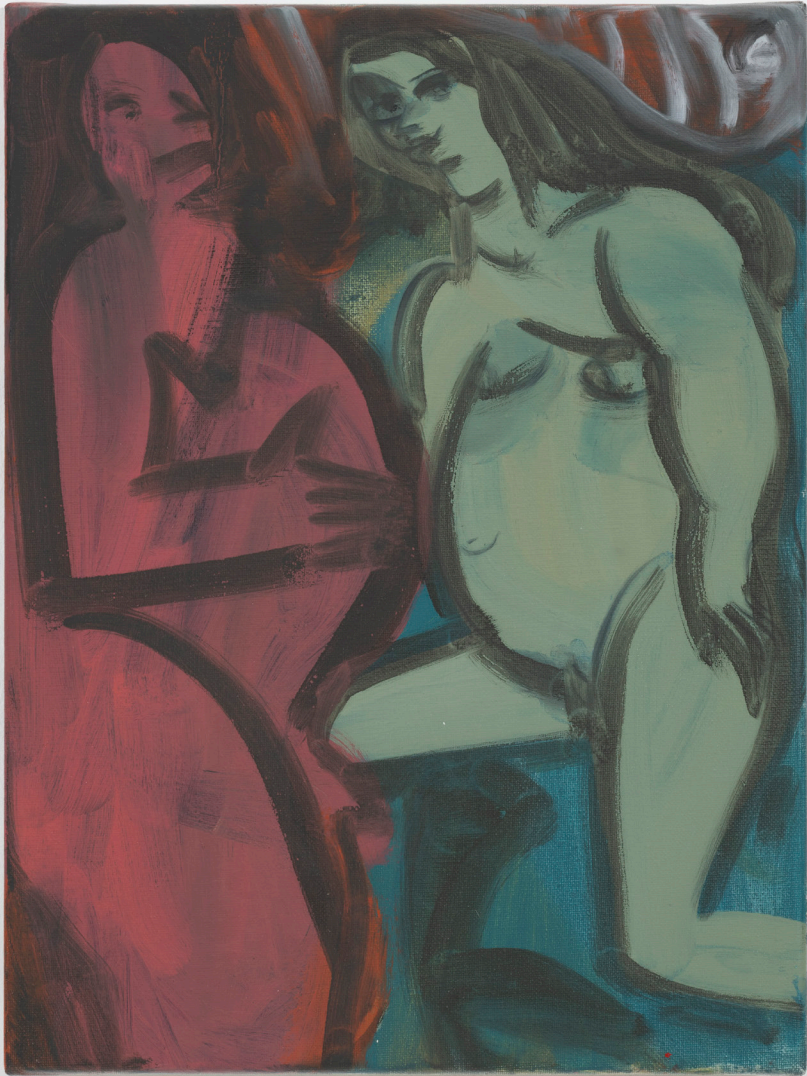
A Composed Grip, 2023
oil on board
30 x 21 cm



Body Suit, 2023
oil on board
20 x 21 cm



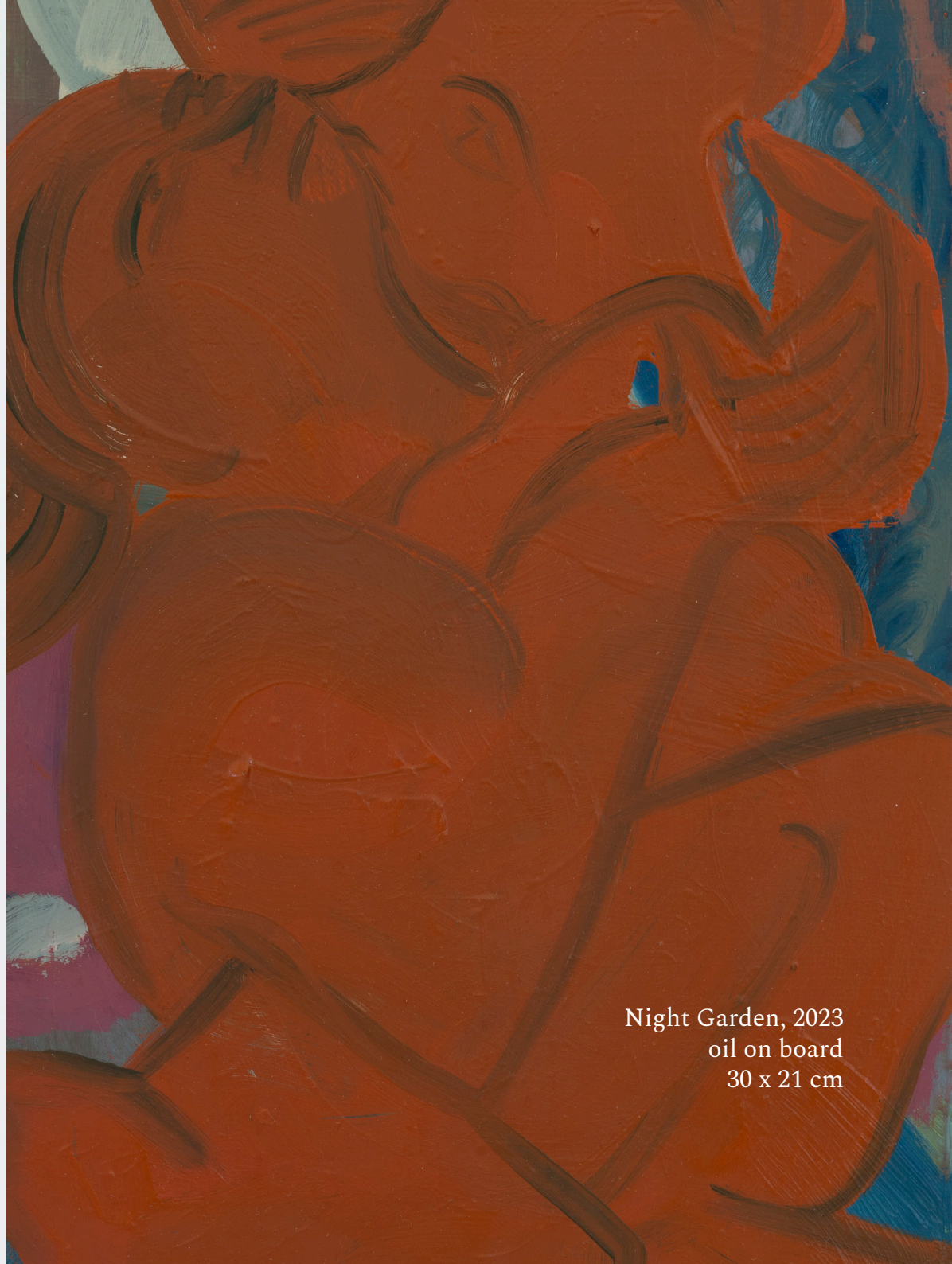
Facetime, 2023
oil on board
30 x 21 cm



Housekeeping, 2023
oil on canvas
40 x 30 cm



Like a Glove, 2023
oil on board
51 x 41 cm



Night Garden, 2023
oil on board
30 x 21 cm



Peleton, 2023
oil on board
21 x 30 cm



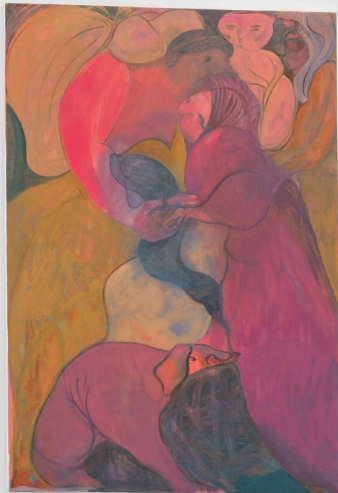
The Enchantment, 2023
oil on board
30 x 21 cm



Watchtower, 2023
oil on canvas
50 x 40 cm



We've Been Here Before, 2022, oil on board, 30 x 40 cm





Benjamin Parsons
x Hannah Payne



kris@kristianday.co.uk

Kristian Day

Benjamin Parsons
x Hannah Payne